

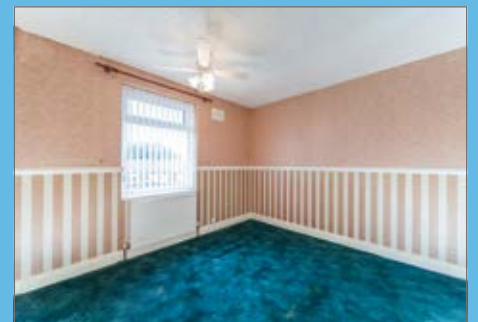
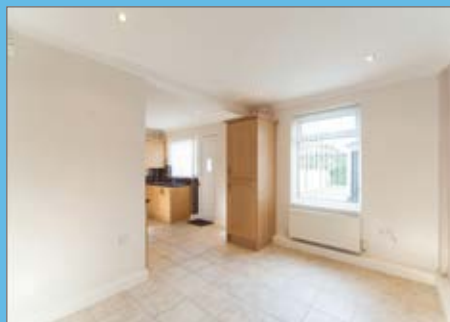
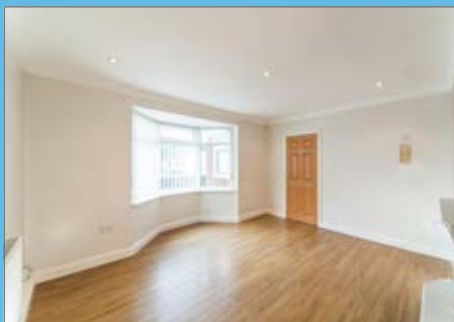
FOR SALE BY AUCTION AT THE CAVERN CLUB, MATTHEW STREET, LIVERPOOL ON 20 OCTOBER AT 7PM

## 25 UPTON GREEN, SPEKE, LIVERPOOL, L24 2UL

GUIDE PRICE £100,000 PLUS



The former childhood home of Beatle George Harrison



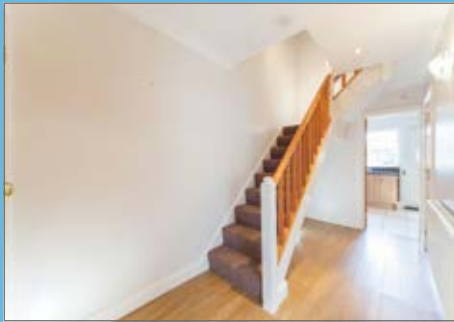
**Countrywide Property Auctions are delighted and honoured to once again be invited to offer at auction, another piece of Beatles history.**

25 Upton Green was the childhood home of the youngest Beatle, George Harrison. The Harrison family moved into the then council house in 1950, when George was just six years old; he spent 12 happy years living there before fame and stardom whisked him away in 1962. It was from here that George walked the short distance to the bus stop to take him

to school at the Liverpool Institute for Boys each day. It was at that very bus stop that he befriended another Institute pupil; Paul McCartney. McCartney was already a member of John Lennon's band, The Quarrymen; and recognising George's talent with the guitar, he was eventually invited to join. Despite his young age, 25 Upton Green became a regular rehearsal venue for The Quarrymen, due in large part to the tolerance of George's parents. It was from the very doorstep of number 25 that the iconic photo (right) was taken; showing the 15 year old George on his way to a Quarrymen gig; guitar case in hand.



[www.countrywidepropertyauctions.co.uk](http://www.countrywidepropertyauctions.co.uk)



housing and is accessed via the main A561, Speke Boulevard. The property is well served for local amenities, with local bus routes nearby, Hunts Cross railway station 2 miles to the north and Liverpool John Lennon airport close to the south.

**ACCOMMODATION**

The property is a former local authority, three bedroom, mid through terraced house; comprising:

**Ground Floor** Hallway, Living Room, Kitchen/ Dining Room

**First Floor** 3 Bedrooms, Bathroom, WC

**Outside** Forecourt, Rear Garden

The property has the benefit of Gas Central Heating and Double Glazing.

**TENURE** Freehold

**VIEWING** The property is to be viewed strictly by appointment only. If you wish to view the property, please contact our Joint Auctioneers, Entwistle Green, Allerton office on 0151 2680 592

**EPC Rating** to be confirmed

**AUCTION SURVEYOR** Andrew Brown



Some of the other images you can see show George in the various rooms of the home and one of his mother in the kitchen as it would have been in his day!

In recent years, the property has undergone a complete renovation with a hallway, lounge, kitchen/dining room and a family sized rear garden. The first floor includes three spacious bedrooms, bathroom and WC.

Following on from last November's hugely successful sale of 9 Newcastle Road, John Lennon's first house, which achieved a sale price of £480,000 from a guide price of £150,000 plus, Countrywide Property Auctions will once again return to the world famous Cavern Club in Liverpool's city centre on the 20th of October at 7pm.

George sadly passed away in November 2001 at the tragically young age of 58; but his memory and musical influence live on to this day. We hope that you will be able to join us for this momentous occasion, when once again, we hope to sell another piece of Liverpool's musical heritage under the hammer.

**LOCATION**

Upton Green is located in the Speke area of Liverpool, approximately 8 miles south east of Liverpool city centre. The property lies within an area of post war, former local authority

